



SIGHTS, SOUNDS & STORIES

2021-2022 🎵 96TH SEASON

DAVID BOWDEN **ARTISTIC DIRECTOR**

VISIT [THSO.ORG](https://www.thso.org) DECEMBER 2021



Terre Haute
Symphony
Orchestra



*Because Sighs
Matter.*



Ross Elliott
J E W E L E R S

55 W. Honey Creek Dr. | rosselliottjewelers.com

SIGHTS, SOUNDS & STORIES

2021-2022 96TH SEASON DAVID BOWDEN ARTISTIC DIRECTOR



Terre Haute
Symphony
Orchestra

SEPTEMBER 21, 2021 SCHEHERAZADE TELLS STORIES



Wagner *Ride of the Valkyries*
Ravel *Mother Goose Suite*

Williams *Raiders March from Indiana Jones*
Rimsky-Korsakov *Scheherazade*

Music has such power to evoke emotions, to connect with the daily joys and sorrows of our lives, and to tell stories about other peoples' lives. Mother Goose, flying female royalty named Valkyries, and Indiana Jones – all are great stories. The seductive Scheherazade is the ultimate "to be continued..." storyteller... and it saved her life! Rimsky-Korsakov brilliantly represents this amazing woman and the tales she told. Filled with orchestral color and virtuosity, it is one of the most compelling and exciting works ever written!

NOVEMBER 6, 2021 BRAHMS & BEACH || WITH NATANIA HOFFMAN, CELLO & BENJAMIN HOFFMAN, VIOLIN



Berlioz *Beatrice & Benedict Overture*
Brahms *Concerto for Violin, Cello & Orchestra "Double"*
Amy Beach *Symphony in E Minor, "Gaelic"*

Amy Beach was an extraordinary woman. In a time when women rarely considered a music career, Amy was one of the greatest composers in our country. Her "Gaelic" Symphony is filled to the brim with passion, power, beauty and lyrical melodies. Benjamin Hoffman, former THSO Associate Concertmaster, returns with his sister, Natania, to perform Brahms' gorgeous Double Concerto, written to repair a strained friendship. It succeeded! Come hear why.

DECEMBER 4, 2021 CANDLELIT HOLIDAYS || WITH RICK VALE, VOCALS

This beloved annual tradition embraces the season with Christmas classics and enchanting music! Plan now to let the music of the season weave another magical memory for you and your family.

APRIL 9, 2022 DISNEY IN CONCERT || MAGICAL MUSIC FROM THE MOVIES

Come be enchanted by **Disney in Concert Magical Music from the Movies** with the THSO, conductor Dr. David Bowden, projected video clips from iconic Disney films, and four leading vocalists. Every new generation has a favorite Disney musical, whether it's *The Little Mermaid*, *Beauty and the Beast*, *Aladdin*, *The Lion King*, or *Frozen*. And then there are the classics, from a *Mary Poppins* medley to the "Yo ho" of *Pirates of the Caribbean*. When everyone joins together for memorable moments and melodies that Mouseketeers of all ages know by heart, it feels like a small world, after all. Presentation licensed by Disney Concerts © All rights reserved

APRIL 30, 2022 RACH 2 WITH DI WU || WITH DI WU, PIANO



Powers *Overture for the THSO*
Rachmaninoff *Piano Concerto No. 2*
Brahms *Symphony No. 1*

Displaying tenderness, lyricism, power, and a charming charisma, Di Wu returns to perform "Rach 2," considered by many to be the world's favorite piano concerto. The concert opens with a favorite work composed by Dan Powers, the THSO's composer-in-residence, and concludes with Brahms' astonishingly powerful first symphony.



All concerts take place at Tilson Auditorium on ISU's campus at 7:30 PM. Event dates, times, artists, and venues subject to change.

BOARD OF DIRECTORS

Barbara Hagerman
President

Ron Danielson
Vice President

Bill Elliott
Secretary

Don Schroeder
Treasurer

Tonya Balch
Past President

Greg Bierly
Bob Brown
David Chapman
David C. Hamilton
Terry Hogan
Jim Jenkins
Jean Kristeller
Eileen Prose
Julie Schlosser
Norma Schmitz

Chris Schellenberg
League President

Bill Fenoglio
Honorary Board Member

Greg Gibson
Honorary Board Member

Lu & Laney Meis
Honorary Board Member

Jerry Mitchell
Honorary Board Member

Jack Ragle
Honorary Board Member

William Shriner
Honorary Board Member

Wieke van der Weijden Benjamin
Emerita Board Member



ADMINISTRATIVE & ARTISTIC STAFF

David Bowden
Artistic Director

Logan Strawn
Bloomington Coordinator

Joey Fenoglio
Stage Manager

Brooke Altheide
Assistant Stage Manager

Daniel Powers
Composer-in-Residence

Samantha Johnson-Helms
Executive Director
Orchestra Manager

Nancy Watkins
Office Manager
Librarian

Barbara Anderson
Office Assistant



SAMANTHA JOHNSON-HELMS

EXECUTIVE DIRECTOR

Welcome to the THSO's 96th season!

I am beyond thrilled to be back at Tilson Auditorium performing in a full orchestra setting with my colleagues for our 2021-2022 season, *Sights, Sounds & Stories*.

The past several months have not been without challenges, but I can tell you **I am still in love with my job** as Executive Director of the THSO and can't wait for our audiences to experience this season.



Even with the many twists and turns of the pandemic, I am so proud that the THSO is *thriving*. Not many orchestras can say they are adding programs and concerts to their offerings during a pandemic! This season we will continue partnering with the **Osher Lifelong Learning Institute (OLLI)** for educational presentations as well as partner with **Westminster Village** to perform a chamber music series once a month on Sunday afternoons. I am particularly thrilled about re-launching our *THSO Presents!* series to feature our world-class THSO musicians in **intimate chamber music concerts** performing some of the world's greatest music for small ensembles. We will continue to post video content on our **YouTube channel**, as well, featuring **musician profiles**, pieces from our **concerts** this season, and more!

But these new and exciting programs could not have happened without one major element. **YOU!** Thank you for continuing to purchase tickets, upgrading to season tickets, purchasing advertising, donating, volunteering, providing in-kind gifts and services, or simply spreading the word about our concerts and events. **We are incredibly grateful for the support we have in the Wabash Valley.**

I hope you enjoy the 2021-2022 season!

Sammy

BARB HAGERMAN

BOARD PRESIDENT

It's a wonderful **SIGHT** to see our audience back at Tilson Hall to enjoy the magnificent **SOUNDS** of the Terre Haute Symphony Orchestra! Besides the musical **STORIES** shared by the musicians, the THSO also has some impressive stories to tell from the past several months.



The challenges presented by the pandemic were met with creative thinking and a “let’s try it” attitude. **Outdoor venues, recorded concerts, and virtual programming** kept our patrons and performers safe without missing a beat. The combined talents of David Bowden, our creative Artistic Director and conductor, along with the techno-wizardry of our Executive Director, Samantha Johnson-Helms, provided the means for the symphony to **flourish and prosper**. Because of them our group was able to **thrive**, not simply survive.

Our board members are energized and ready to provide support, time, and encouragement. They, along with our patrons and our partners, recognize **what an asset the THSO is to the Wabash Valley**. Besides the obvious contribution to the arts, our symphony helps **advance the economic vitality of our community** and encourages business and employees to move to Terre Haute.

We are so fortunate and **grateful** to have such dedicated patrons, professionals, and volunteers involved in the success of our organization. Thank you for supporting the THSO and enjoying **Great Music. Close to Home!**

DAVID BOWDEN ARTISTIC DIRECTOR

Born and raised in North Carolina, David has loved music since he was a very young child. He grew up listening to his mother teaching piano lessons in their home. At the age of 4, he talked her into teaching him piano. In addition to the piano, he has played clarinet, oboe, and organ.

Majoring in piano performance with a minor in organ at Wheaton College Conservatory of Music, David has a particular love for orchestral music that features piano and organ. Recordings of his concerts have been broadcast nationwide on National Public Radio's Performance Today and Public Radio International's Pipedreams. His commercial recording of Marcel Dupré's Complete Music for Organ and Orchestra (Naxos) received rave international reviews.

While a student at Wheaton, David met his wife, Donna, a registered nurse, during an intramural volleyball game. Graduate school took them to Bloomington, where David received his M.M. in Choral Conducting at Indiana University. After teaching in the college setting for several years, David returned to IU and earned a Doctor of Music in Orchestral Conducting.

David enjoys performing a wide variety of repertoire - from opera to symphonic standards to pops and country music. He especially enjoys educational concerts for schools, hoping to inspire children to choose to learn to play an instrument, believing that making music changes lives.

This season marks David's 25th with the Terre Haute Symphony. David is also the Artistic Director and Conductor of the Columbus Indiana Philharmonic and the Philharmonic Chorus.

He is a member of the Pi Kappa Lambda National Music Honor Society and has been listed in Who's Who in America and Who's Who in the World for the past twenty years. He has served as a member of the Board of Directors of the Conductors Guild, an international service organization for conductors, and served as Director of the Conductor's Guild New Music Project for almost two decades.

David and Donna make their home in Bloomington and enjoy traveling and spending time with their children, grandchildren and extended families.





MEET YOUR THSO MUSICIANS

VIOLIN I

Elina Rubio

Concertmaster

Endowed by David & Jerry Mitchell

R. Henry Jenkins

Associate Concertmaster

Juli Enzinger

Assistant Concertmaster

Marisa Votapek

Assistant Concertmaster

Gary Brown

Cindy Chen

Pablo Fernández

Yuri Santos

Michelle Kim

Shelby Mass

VIOLIN II

Erina Buchholz

Principal

Christa Cole

Assistant Principal Second

Kelsea Au

Anna Larson

Paul Roby

Yeonglee Kim

Ryan Tolentino

Spencer Day

Nahye Hannah Lee

Terry Smith

VIOLA

Esteban Hernández Parra

Acting Principal

Dan Powers

Assistant Principal

Elizabeth Doubrawa

Matthew Norman

Lisa Ponton

Shek Wan Li

Lori Carpenter

Jonathan Burns

John F. Moon

CELLO

SeungAh Hong

Principal

Philip Kettler

Associate Principal

William Cayanan

Assistant Principal

Kevin Flynn

Jacob Thompson

Teiun Kim

Paul Zmick

Olivia Hunt

DOUBLE BASS

Brian McAnally

Principal

Jonathan Piccolo

Assistant Principal

Emily Krajewski

FLUTE

Angela Reynolds
Principal
Shelley Criss
Elizabeth Ornduff

PICCOLO

Elizabeth Ornduff

OBOE

Rebecca McGuire
Principal
Jay Kidwell
Jennifer Kirby

ENGLISH HORN

Jennifer Kirby

CLARINET

Samantha Johnson-Helms
Principal
Sponsored by Chris Schellenberg
Li-Jie Yu
Keith Northover

BASS CLARINET

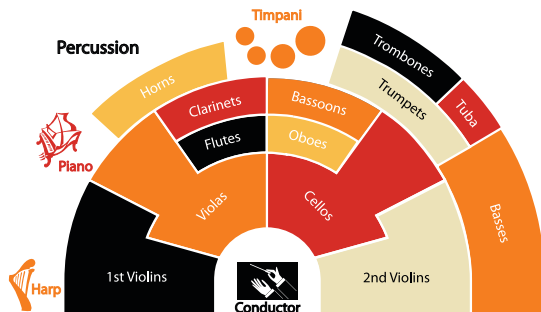
Keith Northover

BASSOON

Chad Roseland
Principal
Sara Fruehe

HORN

Brian T. Kilp
Principal
Judith A. Hamilton
Assistant Principal
Sharon Weyser
Cameron Wray
Layne Anspach



TRUMPET

Jay Ellsmore
Principal
Eric Rodriguez
Richard Stinson

TROMBONE

Randy Mitchell
Principal
Norman R. Hanson
Matthew Fowler

TUBA

Glen Dimick
Principal

TIMPANI

Brian McNulty
Principal

PERCUSSION

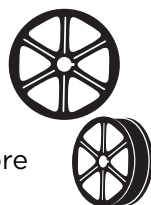
Keegan Sheehy
Principal
Lucas Allen
John Sevy

KEYBOARD

Timothy Stephenson
Principal

HARP

Harriet Thompson Moore
Principal





JOIN THE

*Terre Haute
Symphony League*

TODAY!

The Symphony League is a group of essential volunteers who help promote the interest and presentation of the THSO in the Wabash Valley

Visit thso.org and click "League" for more info or contact
Chris Schellenberg, President
(812) 234-1218
cschellen2002@yahoo.com

Protect your world

Auto • Home • Life • Retirement



Call me today to discuss your options.

Some people think Allstate only protects your car. Truth is, Allstate can also protect your home or apartment, your boat, motorcycle - even your retirement and your life. And the more of your world you put in Good Hands®, the more you can save.

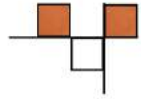
Bryan Sponsler
812-466-4232

2331 Lafayette Ave.
Terre Haute, IN 47805
bryansponsler@allstate.com



Insurance subject to terms, qualifications and availability. Allstate Property and Casualty Insurance Co., Allstate Vehicle and Property Insurance Co., Allstate Insurance Co., Allstate Indemnity Co. Life insurance offered through Allstate Life Ins. Co. & Allstate Assurance Co., Northbrook, IL; Lincoln Benefit Life Co., Lincoln, NE; and American Heritage Life Insurance Co., Jacksonville, FL. Securities offered by Personal Financial Representatives through Allstate Financial Services, LLC (LSA Securities in LA and PA). Registered Broker-Dealer. Member FINRA, SIPC. Main Office: 2920 South 84th Street, Lincoln, NE 68506. (877) 525-5727. © 2010 Allstate Insurance Co.

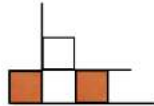
183311



AMERICAN TILE & SALES CO.

2142 Wabash Avenue
Terre Haute, IN

Phone: 812-232-6923
Fax: 812-232-7367



TWILIGHT

**Anderson's
MEDICAL PRODUCTS**

4411 South 7th Street, Terre Haute, IN
812-234-6084

522 West 2nd Street, Bloomington, IN 47403
812-339-1555

Golden lift chairs are
Class II Medical Devices.

PR761 shown in
Brisa® Shiratake®

PROUDLY MADE
BY AMERICANS
Use Recycled & Recycled Materials

Paitson

ROOFING CO., INC.

"Same location with quality service since 1950"

"Let our reputation be your guide"



www.PaitsonRoofingAndHomeImprovement.com

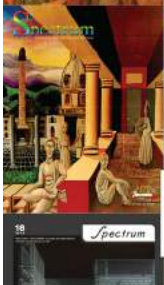
ROOFING | SIDING | REMODELING | ROOM ADDITIONS

All work performed by our own
skilled craftsman.

812-232-2869

34 North 12th Street
Terre Haute, IN 47807

Licensed • Bonded • Insured

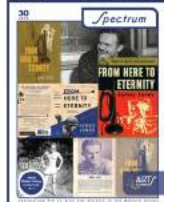


... is proud to support the
**Terre Haute
Symphony Orchestra!**

Find out about all the great arts and cultural activities that our community has to offer by reading *Spectrum* magazine!

Stop by the Arts Illiana Gallery to pick up your free copy of *Spectrum*, or become a member to have each new issue directly mailed to you.

Arts Illiana
23 N. 6th St
Downtown Terre Haute
Open Monday through Saturday
www.ArtsIlliana.org



PROUDLY PRINTED BY



BIGPICTURE

COPY | PRINT | DESIGN

812.235.0202
BIGPICONLINE.COM

608 NORTH 13TH STREET
TERRE HAUTE, INDIANA



thso
Presents!

concert chamber series

riveting • spontaneous • passionate • intimate

Join members of the THSO for intimate performances of the world's greatest chamber music. Audiences will experience firsthand the collaborative spontaneity that makes chamber ensembles some of the most exciting to watch. Programs will feature brass quintets, woodwind quintets, string quartets, and more!

october 16

Rose-Hulman Campus, Hatfield Hall

january 22

Terre Haute Brewing Company

march 5

Rose-Hulman Campus, Hatfield Hall

Tickets » \$15 • \$32 • \$48 // THSO.org • 812-242-8476



Return to an
active
lifestyle.

***Same-day Orthopedic Care.
Walk-ins Welcome.***

Bone & Joint Center
1725 N. 5th Street
812.242.3005

**UNION
HEALTH**

Healthier, together.





NEW!



Online Store

Support your favorite symphony orchestra in a brand new way by visiting our **NEW** Online Store!

Visit **thso.org** and click **STORE**.

Free Shipping on orders over \$50.
Use code **FREESHIP50**

OR TRY THIS
QR CODE!



Open your **smart phone camera** and **hover over** this QR code.
Click the link when it appears!

RICK VALE *BARITONE*

Rick Vale, award-winning songwriter/composer and singer/actor originally from Seattle, performs in the mid-west as a vocalist for the acclaimed Indianapolis Jazz Orchestra and Indy-klez. He has performed as featured vocalist for many symphonic orchestras, from Seattle to New York and all places in between, while also performing roles with Seattle Opera, Tacoma Opera, and Off-Broadway (NY).



As a published songwriter/composer his concert works, plays, operas, ballets, choral pieces and art songs have been performed and commissioned by such entities as The Washington State Arts Commission, Seattle Opera Company, The Children's Theatre of Novosibirsk, Russia, and The Terre Haute Symphony Orchestra. His songs have been performed by soloists, choirs and orchestras all over the world, and his music has been recorded by such artists as the London Symphony orchestra and Sandi Patty (who has recorded 8 of his songs).

Rick is married, with two adult sons, currently residing in Anderson, Indiana - where he continues to write and compose. He is in his 8th season as Artistic Director of The Alley Theatre and celebrates his 15th year as Senior Minister at Central Christian Church (Anderson, IN).





Terre Haute
Symphony
Orchestra

OUR PARTNERS

The Terre Haute Symphony Association gratefully acknowledges the following organizations and individuals for their support of concerts and programs. To become a THSO partner, please call 812-242-8476.

STANDING OVATION \$25,000+



**INDIANA ARTS
COMMISSION**
MAKING THE ARTS HAPPEN

Indiana Chemical Trust



Jerry Penman Mitchell
*on behalf of the late
David Carroll Mitchell*



**ALLEN
WHITEHILL
CLOWES**
CHARITABLE FOUNDATION

FOUNDER'S SOCIETY \$15,000+

**Hollie & Anna
Oakley Foundation**



BRAVO \$10,000+

**Bob & Jo Brown
Terry & Judy Hogan
William & Nancy Shriner**



Healthier, together.



First Financial Bank

Morgan Stanley
Argentum Group

OVATION \$5,000+



Chris Schellenberg
*in honor of Jim Schellenberg
& Lois Alberti*

**Bill Fenoglio & Stephanie Salter
Ed & Lorna Brett**
in memory of Lorraine Brett



Greg & Amy Gibson
Gregory L. Gibson Charitable Foundation, Inc.
Jack Ragle
Jane & John Morse
Terre Haute Symphony League



GOLD CIRCLE \$2,500+



Jo Einsteadig
Sheron Dailey & Tom Tucker
Templeton Coal Company, Inc.



Robert L. Cowden
City of Terre Haute

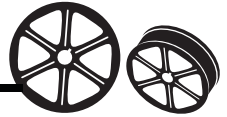


R. David & Barbara Hagerman
William Hughes, Jr.

PRESENTED IN MEMORY OF
DAVID & JERRY MITCHELL



TONIGHT'S SPONSORS



First Financial Bank

JERRY PENMAN MITCHELL

ED & LORNA BRETT
In Memory of Lorraine Brett

Ross Elliott
JEWELERS

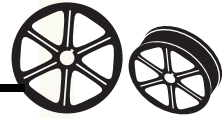


Terre Haute Symphony Orchestra
David Bowden Artistic Director

CANDLELIT HOLIDAYS

DECEMBER 4, 2021 🎵 7:30 PM 🎵 TILSON AUDITORIUM

DAVID BOWDEN, CONDUCTOR
RICK VALE, BARITONE



Bugler's Holiday	Leroy Anderson
A Christmas Festival	Anderson
The First Noel	trad/Eads
Fantasia on Greensleeves	Vaughan Williams
I Wonder as I Wander	trad/Powers
Angels We Have Heard on High	trad/Clydesdale
Symph - Hanukkah	Peter Jaffe
Adele's Laughing Song	Johann Strauss, Jr.
from <i>Die Fledermaus</i>	

Caroline Goodwin, *soprano*

INTERMISSION

Overture: Rejoice and Be Merry	Daniel Powers
Clarinet Candy	Anderson
There is Faint Music	Dan Forrest
O Holy Night	Adam/Clydesdale
Holiday Memories (Singalong)	arr. Powers
Prayer of St. Gregory	Alan Hovhaness
	Jay Ellsmore, <i>trumpet</i>
Star of Bethlehem	Rick Vale
Night of Silence	Daniel Kantor
We Wish You a Merry Christmas	Harris

HOLIDAY SINGALONG

Winter Wonderland

Sleigh bells ring, are you listening,
In the lane, snow is glistening
A beautiful sight,
We're happy tonight.
Walking in a winter wonderland.

Gone away is the bluebird,
Here to stay is a new bird
He sings a love song,
As we go along,
Walking in a winter wonderland.

In the meadow we can build a snowman,
Then pretend that he is Parson Brown

He'll say: Are you married?
We'll say: No man,
But you can do the job
When you're in town.

Later on, we'll conspire,
As we dream by the fire
To face unafraid,
The plans that we've made,
Walking in a winter wonderland.

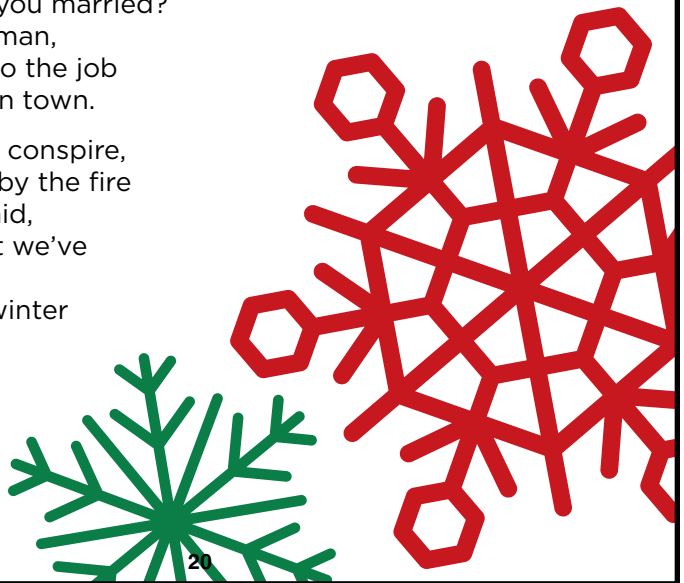
Frosty the Snowman

Frosty the snowman was a jolly happy soul, with a corncob pipe and a button nose and two eyes made out of coal.

Frosty the snowman is a fairy tale, they say,
He was made of snow but the children know how he came to life one day.

There must have been some magic in that old silk hat they found. For when they placed it on his head he began to dance around.

O, Frosty the snowman was alive as he could be,
And the children say he could laugh and play just the same as you and me.



HOLIDAY SINGALONG

Winter Wonderland

Sleigh bells ring, are you listening,
In the lane, snow is glistening
A beautiful sight,
We're happy tonight.
Walking in a winter wonderland.

Gone away is the bluebird,
Here to stay is a new bird
He sings a love song,
As we go along,
Walking in a winter wonderland.

In the meadow we can build a snowman,
Then pretend that he is Parson Brown

He'll say: Are you married?
We'll say: No man,
But you can do the job
When you're in town.

Later on, we'll conspire,
As we dream by the fire
To face unafraid,
The plans that we've made,
Walking in a winter wonderland.

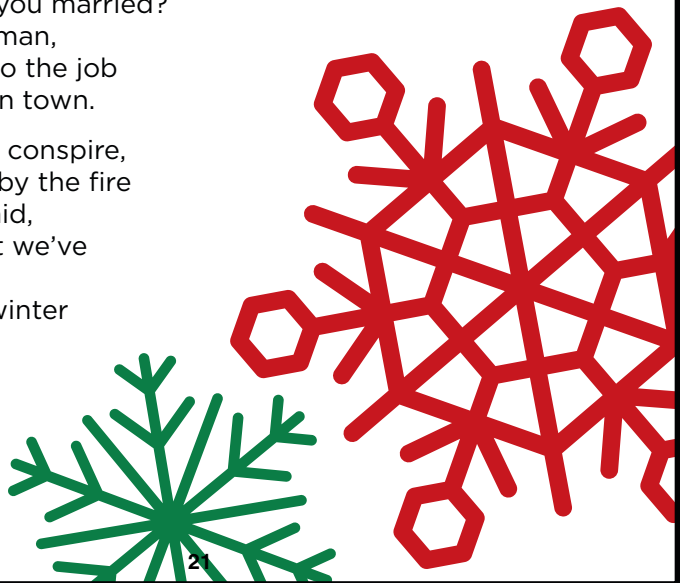
Frosty the Snowman

Frosty the snowman was a jolly happy soul, with a corncob pipe and a button nose and two eyes made out of coal.

Frosty the snowman is a fairy tale, they say,
He was made of snow but the children know how he came to life one day.

There must have been some magic in that old silk hat they found. For when they placed it on his head he began to dance around.

O, Frosty the snowman was alive as he could be,
And the children say he could laugh and play just the same as you and me.





One of America's Best Banks

Forbes

[first-online.com](https://www.first-online.com)

Member FDIC

CAROLINE GOODWIN *SOPRANO*

A native of Terre Haute, Indiana, Caroline is a soprano pursuing a Master of Music degree in voice at Indiana University Jacobs School of Music. She earned a Bachelor of Science in Voice with an Outside Field in History at IU in 2021.

Caroline first began performing in musicals at Terre Haute North Vigo High School. A favorite role was Maria in *West Side Story*. Past roles with various organizations include Liesl in *The Sound of Music*, Mrs. Mayor in *Seussical the Musical*, and Lou Ann in *Hairspray*.

During her time at Indiana University, Caroline has sung in the IU Opera chorus - most recently as the Second Spirit in IU Opera Theater's *The Magic Flute*. She has also sung several roles with ROK: Reimagining Opera for Kids, an outreach organization that commissions and produces children's operas for performances at Indiana grade schools. Last May, Caroline was honored to perform the program *Hats Off to Broadway* with Tim Stephenson, THSO Principal Keyboard, as a fundraiser for the THSO.



In addition to dramatic performances, Caroline enjoys singing jazz and American Songbook standards. Outside of the world of music, Caroline is an avid classic film fan and a vintage fashion enthusiast. She has also enjoyed many hours as a volunteer in historical museums, including Terre Haute's own Vigo County Historical Museum. Caroline is thrilled to take the stage with the Terre Haute Symphony Orchestra after many years as an enthusiastic fan.

CONNECT WITH US



@terrehautesymphonyorchestra



@THSO1



@terrehautesymphony

#THSO #THSYMPHONY





Thank You

Dr. David Bowden, THSO Musicians & Staff
for sharing your gifts and talents.

From Kathleen Culver

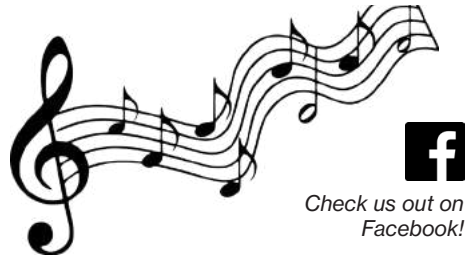


Energizing the arts.



Duke Energy is proud to play a supporting role in this thriving arts community.

www.duke-energy.com



Check us out on
Facebook!

Men of Note Band

Classic Swing for your dancing
and listening enjoyment



Dalvin Boone

(812) 877-6414
dalvin.boone1@frontier.com

Norm Hanson

(812) 448-2316
normhanson10@gmail.com

The Station Floral Studio

1629 Wabash Avenue
TerreHaute, IN
(812) 235-0310



THE
LOCAL
VINYL

JOIN US MONTHLY

SECOND
SATURDAY
SHOW

&

LAUGHS AT
THE LOCAL



DISCOVER. COLLECT. CONTRIBUTE.

PARQ Building in 12 Points

2170 N 13th St





The Volklers Group

A financial advisory practice of
Ameriprise Financial Services, LLC

2963 Erie Canal Rd
Terre Haute, IN 47802
(812) 232-5822 | volklersgroup.com

LOCALLY OWNED

Providing Investment Services
Since 1996

**Not Federally Insured | No Financial Institution
Guarantee | May Lose Value**

Ameriprise Financial Services, LLC. Member FINRA and SIPC.
© 2021 Ameriprise Financial, Inc. All rights reserved.



677 WABASH AVE. TERRE HAUTE, IN

FOR THE BEST IN LIVE MUSIC
CALL THE PROFESSIONALS !



**TERRE HAUTE FEDERATION
OF MUSICIANS**

LOCAL No. 25, A. F. OF M.
Serving Illinois and Indiana



**WEDDINGS DANCES
RECEPTIONS REUNIONS**

(812) 878-0239

The
Saratoga
Est. 1942

*Proud supporters of the
Terre Haute Symphony!*

431 Wabash Ave
Terre Haute, IN 47807
(812) 234-1161
thesaratogarestaurant.com



 Life Care Services
— LCC —

**#1 IN CUSTOMER
SATISFACTION
AMONG
SENIOR LIVING
COMMUNITIES**

2014 FORTUNE MAGAZINE'S BEST OF BEST AWARDS


**WESTMINSTER
VILLAGE**

1120 E Davis Drive Terre Haute 812.242.4600 WestminsterVillageIN.com

HATFIELD HALL

PERFORMING ARTS SERIES

2021-2022

THE OAK RIDGE BOYS
ELVIRA 40 TOUR
OCT. 10, 2021



PINK MARTINI
FEATURING
CHINA FORBES



HERE COME
THE MUMMIES



OCT. 24, 2021

NOV. 11, 2021

DAILEY & VINCENT



ALL I WANT FOR
CHRISTMAS IS...Y'ALL
DEC. 8, 2021

THE CHOIR
OF MAN
JAN. 22, 2022



THE RUSSIAN
NATIONAL BALLET
PRESENTS:
CINDERELLA



FEB. 10, 2022



VELOCITY
IRISH DANCE
MAR. 19, 2022



THE TEXAS
TENORS
APR. 30, 2022

BRITBEAT
MAY 14, 2022



CALL 812-877-8544 OR VISIT
HATFIELDHALL.COM
FOR MORE INFORMATION

ROSE-HULMAN
INSTITUTE OF TECHNOLOGY

2021-2022 Season



Mainstage Series

WAIT UNTIL DARK

by Frederick Knott
September 17-26

THE CEMETERY CLUB

by Ivan Menchell
November 12-21

LITTLE WOMEN

music by Jason Howland
lyrics by Mindi Dickstein
book by Allan Knee
January 14-23

VANYA AND SONIA AND MASHA AND SPIKE

by Christopher Durang
March 11-20

SHREK: THE MUSICAL

music by Jeanine Tesori
lyrics and book by David Lindsay-Abaire
May 13-22

Oakley Series

BEANIE AND THE BAMBOOZLING BOOK MACHINE

by Roy C. Booth, Bob May and Christopher Tibbetts
December 9-12

THE GOLDMAN PROJECT

by Staci Swedeen
February 17-20

ctth.org

Community Theatre of Jerre Haute

SUPPORT THE SYMPHONY

5 WAYS to support the THSO



Donate to our symphony fund at THSO.org



Purchase concert tickets



Sponsor a guest artist or concert



Place an ad in our program book



Join the THSO Symphony League

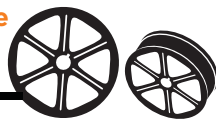


Terre Haute
Symphony
Orchestra



SYMPHONY FUND CONTRIBUTORS

The Terre Haute Symphony Orchestra is grateful for pledges and donations to our Symphony Fund from July 1, 2020 to June 30, 2021, allowing us to provide **GREAT MUSIC! CLOSE TO HOME.**



STANDING OVATION \$25,000+

Geraldine Penman Mitchell
Indiana Arts Commission
Allen Whitehill Clowes Foundation
Indiana Chemical Trust



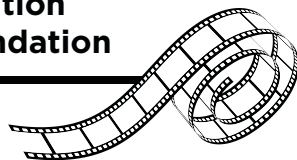
CONDUCTOR'S CIRCLE \$20,000-\$24,999

Union Health Hospital



FOUNDER'S CIRCLE \$15,000-\$19,999

Hollie & Anna Oakley Foundation
Wabash Valley Community Foundation



BRAVO \$10,000 - \$14,999

First Financial Bank



OVATION \$5,000 - \$9,999

Old National Bank
Thompson Thrift
Terry & Judy Hogan
Greg L Gibson
Charitable Foundation, Inc.

Terre Haute
Symphony League
William & Nancy Shriner
Bob & Jo Brown
Terre Haute Savings Bank

GOLD CIRCLE \$2,500 - \$4,999

Jo Einsteadig
Vigo County Public Library
Sheron Dailey & Tom Tucker
Templeton Coal Company, Inc.

Ross Elliott Jewelers
Robert L. Cowden
in memory of Corinne L. Cowden
City of Terre Haute

SILVER CIRCLE \$2,000 - \$2,499 PATRON \$750 - \$999

Carl Bender & Barbara Brugnaux
Ed & Lorna Brett
Jack & Margo Fenoglio
Fireplace World
Dick & Betsy Frank
Barb and H. David Hagerman
Laney Meis
Robert & Penny Schafer
Weston Wabash Foundation
Les & Anna Zimmerman

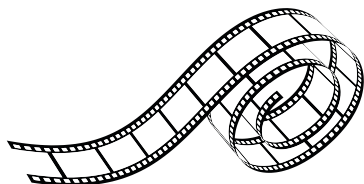
Joyce Wilson
*in memory of R. Marshall Bowden
& David Watkins*
in honor of Janelle Huber

VIRTUOSO \$1,000 - \$1,999

Bob & Julie Baesler
David & Donna Bowden
in memory of R. Marshall Bowden
in honor of Phyllis C. Bowden
Ron & Marsha Danielson
Karen DeGrange
Bill Fenoglio & Stephanie Salter
Jim & Cyndee Jenkins
Jane & John Morse and Morse
Family Charitable Fund
Emma Jean Neal
John & Karen Perry
Eileen Prose
Richard L. Rowe
in memory of JoAnne S. Rowe
Thomas & Norma Schmitz
Don & Susan-Templeton Scott
and Donald W. Scott
Foundation
W.A. & Jacque Trinler

BENEFACTOR \$500 - \$749

Pauline Anshutz
Dan & Cheri Bradley
Drs. Lloyd & Wieke Benjamin
Dalvin & Jean Boone
Robert & Tammy Coons
Jim & Bev Cristee
Kathleen Culver
Bill & Maria Elliott
Frederick Benson Trust
Max & Jacqueline
Gibson Foundation
Will & Betsy Hine
Rod & Karen Heefner
in memory of Corinne Cowden
Randall & Susan Johnson
in memory of Louise C. Johnson
Lilly Foundation
Dierdre Llewellyn
Max & Jacqueline Gibson
Foundation
Gayle McCullough
David & Judy Rader
Paul & Margaret Roby
Brent & Melinda Schludecker
in memory of James S. Sizemore
Ginger Smith
Cherrie Soper
Richard & Willis Watson
in memory of David Watkins
Nancy Watkins
in memory of David Watkins
Wilkinson, Goeller, Modesitt,
Wilkinson, & Drummy, LL
David & Joan Zaun



SUSTAINER \$250 - \$499

Drs. Brad & Tonya Balch
Steve & Debbie Benefiel
George & Susan Brattain
W. Curtis & Linda Brighton
Dan & Terri Conley
in memory of R. Marshall Bowden
Shelley Criss
Jack Diel
June Dunbar
Paul & Nancy Edgerton
Dr. Gene England
Philip Ewoldsen & David Rose
Connie Francis
Larry Gadberry
Glenna Gibbs
Pat & Marti Goodwin
Charles Grady
*in memory of Shirley
Underwood & Douglas Smith*
Tim & Gail Hayes
Barry & Kelly Helms
Dr. William Hughes
Gloria Jackson
Carolyn Jeffries
Marsha Miller
Patricia Minnis
Andrew & Jennifer Myers
Fred & Nancy Nation
Ann Peterson
in honor of Emma Jean Neal
David & Deanna Pettyjohn
Don & Wendy Schroeder
Dr. Frank Swaim
Tom & Carol Templeton
Tom & Jenny Thomas
Eula Webb
*in honor of Jack Ragle and
Lu & Laney Meis*

DONOR \$100 - \$249

Margie Anshutz
in honor of Laney Meis
George & Laura Bakken
Walter & Elizabeth Balcavage
Karl Barnebey
Duke Bennett
Norma Beymer
Julia Bonham
R. Marshall & Phyllis Bowden
Valeri Chapman

DONOR \$100 - \$249 CONT'D

Wayne & Lois Collins
Shelley Criss
Lois Danner
St. Maximilian Kolbe Friary
Susan Dehler
Patrick & Judith Duffy
Peter P.J. Ekstrom
Steve Elam
Joy Emery
Arthur Feinsod & Mary Kramer
Janice Fellows
John Folse
John & Regina Foradori
Larry Hall
Mary Halsted
Dr. Paras & Mrs. Roopam Harshawat
John & Janet Hasten
Judith Hatch
Tom & Joanna Hebermehl
William Heinrich
Cory Helms &
Samantha Johnson-Helms
in memory of David Watkins
Jerry & Nancy Hile
Dale Hudson
Gretchen Jennermann
in memory of David Watkins
Mary Jensen
in memory of Louis R. Jensen
Sally Johnson
in honor of Samantha Johnson-Helms
Jonathan & Sally Kahn
Joe Kasenga & Kayla Dawson
Charles Kindrick
Mike & Nicole King
Jean Kristeller
in memory of Louise Kristeller
Rea Linville
James R. and Eileen Mann II
Phil Marone & Barb Anderson
in memory of David Watkins
Larry & Roberta Marietta
Maurice & Naomi Miller
Andrea & Ryan McCoy
Bruce & Constance McLaren
Merrill & Merrill Insurance
Judith Mullican
James Owen
Paitson Roofing Co, Inc.
Chris & Tonya Pfaff
Don Richards & Martha Crossen
Jon & Becky Robeson
Jon Romas
Laura Savage
*in memory of The Magnificent James
Conyers and David Watkins*

DONOR \$100 - \$249 CONT'D

Chris Schellenberg
*in memory of Jim Schellenberg and
R. Marshall Bowden*

Dorothy Scott

Harry & Rosaline Secrest

Kenneth & Rita Senseman

Jack Sheehy

in honor of Keegan & Kevin Sheehy

Nellie Simbol

Ronald & Ann Speedy

Stone Piano Service

Shirley Slutz

Mark & Linda Spelbring

in memory of Linda Neumann

Mary Stepp

Larry & Kathy Taylor

Michael & Sandra Treaster

Jean Turnmire

Caroline Unger

Wabash Valley Chapter.

Southern Indiana Area Labor
Federation, AFL-CIO

Patrick & Grace Walker

Dan & Barbara Weber

James Wells

Charles & Donna Williams

Deborah Wight

in memory of Allen R. Keathly

Curtis Winkle

Joanne Wright

James & Jane Wood

FRIEND \$50 - \$99

Frank & Ruth Acker

Eric & Veanne Anderson

Virginia Anderson

Frank & D. Marlene Bilyou

Paul & Ruth Bro

Victor Cayanan

J. Chris Castle

V. Jane Conner

Jim & Bev Cristee

in memory of David Watkins

Drs. Russel & Kathleen Coutinho

Mr. & Mrs. Ralph Dale

Dennis Dieken

Angelo DiSalvo

Jim & Deborah Dodson

Donald & Terry Edwards

Nancy Gumm

Catherine Hagerman Pangan

Diana Joslin

FRIEND \$50 - \$99 CONT'D

Dr. Jennifer M. Kirby & Liza M. Saracina

in memory of R. Marshall Bowden

Dr. William and Susan Kleinman

in memory of Betty Heine

Christopher & Phyllis Koszewski

Jeff & Darla Layton

Karen Leitze

Michael & Joan Lunsford

Jane Mangrum

Kathleen Martin

Robert & Mary McLaughlin

Jesus Medina

Dr. Elenor Meurer

Steve & Beverly Newman

Margaret Pabst

Edward Pease

Rick & Peggy Powis

in honor of Sheron J. Dailey

Tracy Pruitt

Tom & Susan Punzelt

Larry Rosenhein

Harry & Rosaline Secrest

Barbara Schmitt

Marylea Scott

Kent & Tamara Stultz

Sarah Sudbrink

Patricia Toffolo

Milt & Suzanne VanReed

Robert E. Wise

In Memory of R. Marshall Bowden

David & Donna Bowden

Dan & Terri Conley

Ron & Marsha Danielson

Dr. Jennifer Kirby & Liza Saracina

Eileen Prose

Chris Schellenberg

Joyce Wilson

In Memory of David Watkins

David & Donna Bowden

Jim & Bev Cristee

Sheron Dailey

Gretchen Jennerman

Samantha Johnson-Helms

Phil Marone & Barb Anderson

Laney Meis

Laura Savage

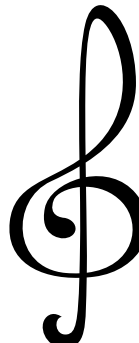
Nancy Watkins

Richard & Willis Watson

Joyce Wilson

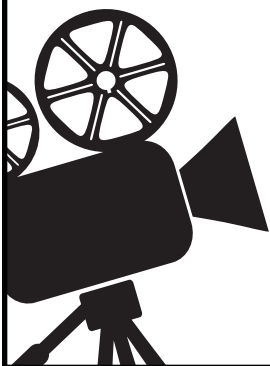
**If your name should be listed or is misspelled, we apologize.
Please correct our mistake by letting us know at info@thso.org
or 812-242-8476. We will correct it immediately.**

**ADD YOUR NAME TO THIS DONOR LIST
DONATE TODAY AT THSO.ORG**



ADVERTISER INDEX

Allstate	9	Riddell National Bank	Inside Back Cover
American Tile & Sales Company	9	Ross Elliott Jewelers	Inside Front Cover
Anderson Medical Products	9	Terre Haute Federation	28
Arts Illiana	11	of Musicians, Local 25	
Baesler's Market	25	Terre Haute Symphony League	8
Big Picture	12	The Local Vinyl	26
Community Theater of Terre Haute	28	The Saratoga	28
Duke Energy	25	The Station Floral Studio	26
First Financial Bank	22	The Verve	27
Hilton Garden Inn	Back Cover	The Volkers Group LLC	27
Kathleen Culver	25	Union Health Center	14
Men of Note Band	25	Westminster Village	28
Old National Bank	8		
Paitson Roofing Co.	10		



riddellonline.com

800.940.2611



proud to support

THE TERRE HAUTE SYMPHONY ORCHESTRA

At Riddell National Bank, we are committed to supporting the arts and programs that improve the quality of life in the communities where we live and work.





Hilton Garden Inn®

750 Wabash Ave.

Terre Haute, IN 47807

(812) 234-8900

<http://www.terrehaute.stayhgi.com>

